

Downtown Wylie Mixed Use Project

City of Wylie

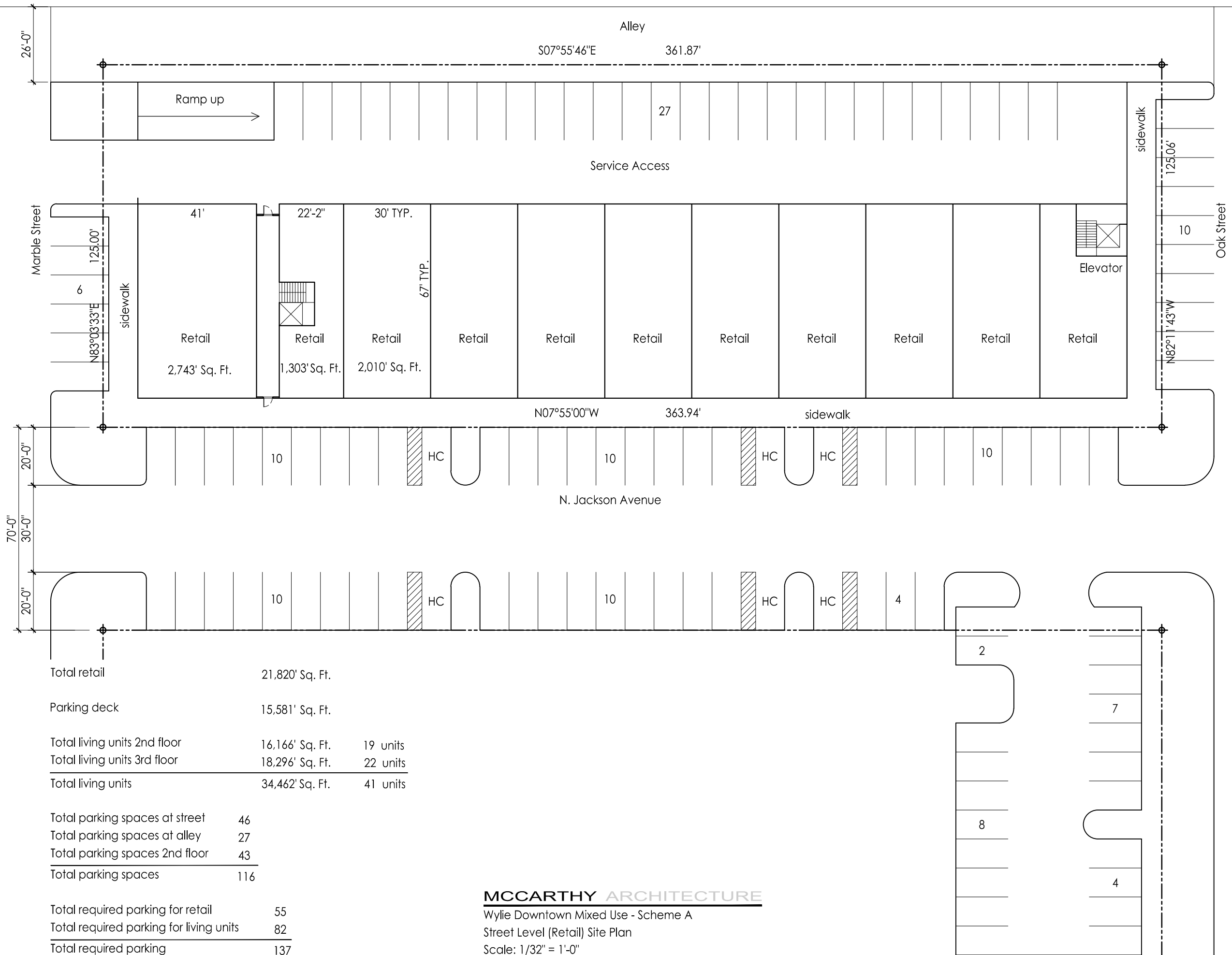
December 8, 2015



McCarthy Architecture



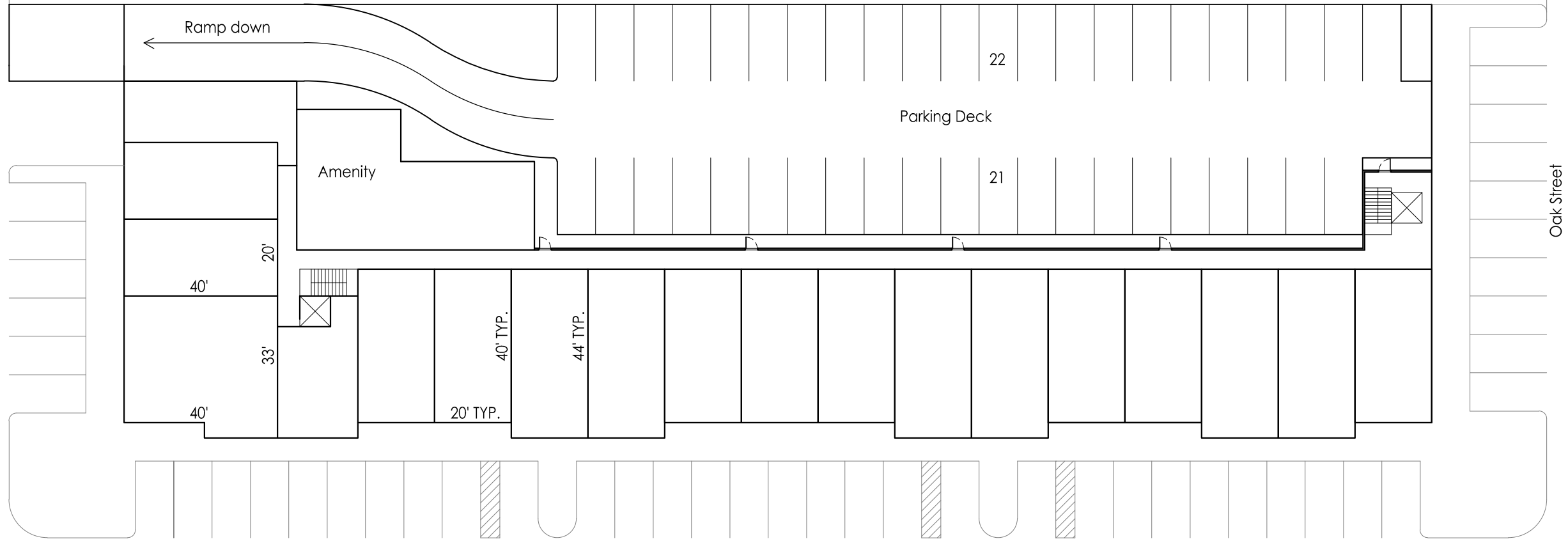
Jackson Street Elevation



Total retail	21,820' Sq. Ft.	
Parking deck	15,581' Sq. Ft.	
Total living units 2nd floor	16,166' Sq. Ft.	19 units
Total living units 3rd floor	18,296' Sq. Ft.	22 units
Total living units	34,462' Sq. Ft.	41 units
Total parking spaces at street	46	
Total parking spaces at alley	27	
Total parking spaces 2nd floor	43	
Total parking spaces	116	
Total required parking for retail	55	
Total required parking for living units	82	
Total required parking	137	

MCCARTHY ARCHITECTURE
Wylie Downtown Mixed Use - Scheme A
Street Level (Retail) Site Plan
Scale: 1/32" = 1'-0"

Marble Street



N. Jackson Avenue

Oak Street

MCCARTHY ARCHITECTURE

Wylie Downtown Mixed Use - Scheme A

Second Level Living Unit

Scale: 1/32" = 1'-0"

Marble Street

Oak Street

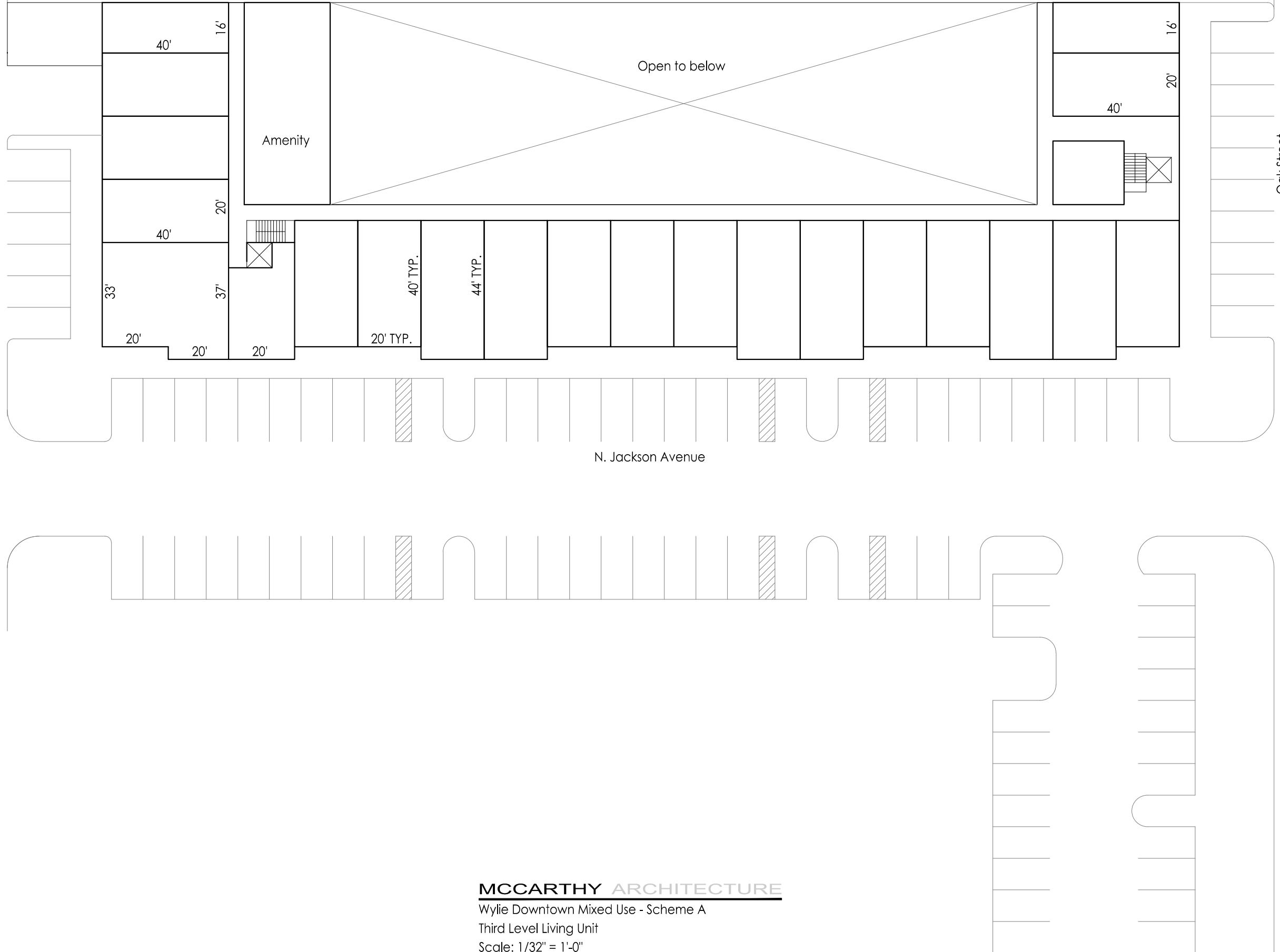
N. Jackson Avenue

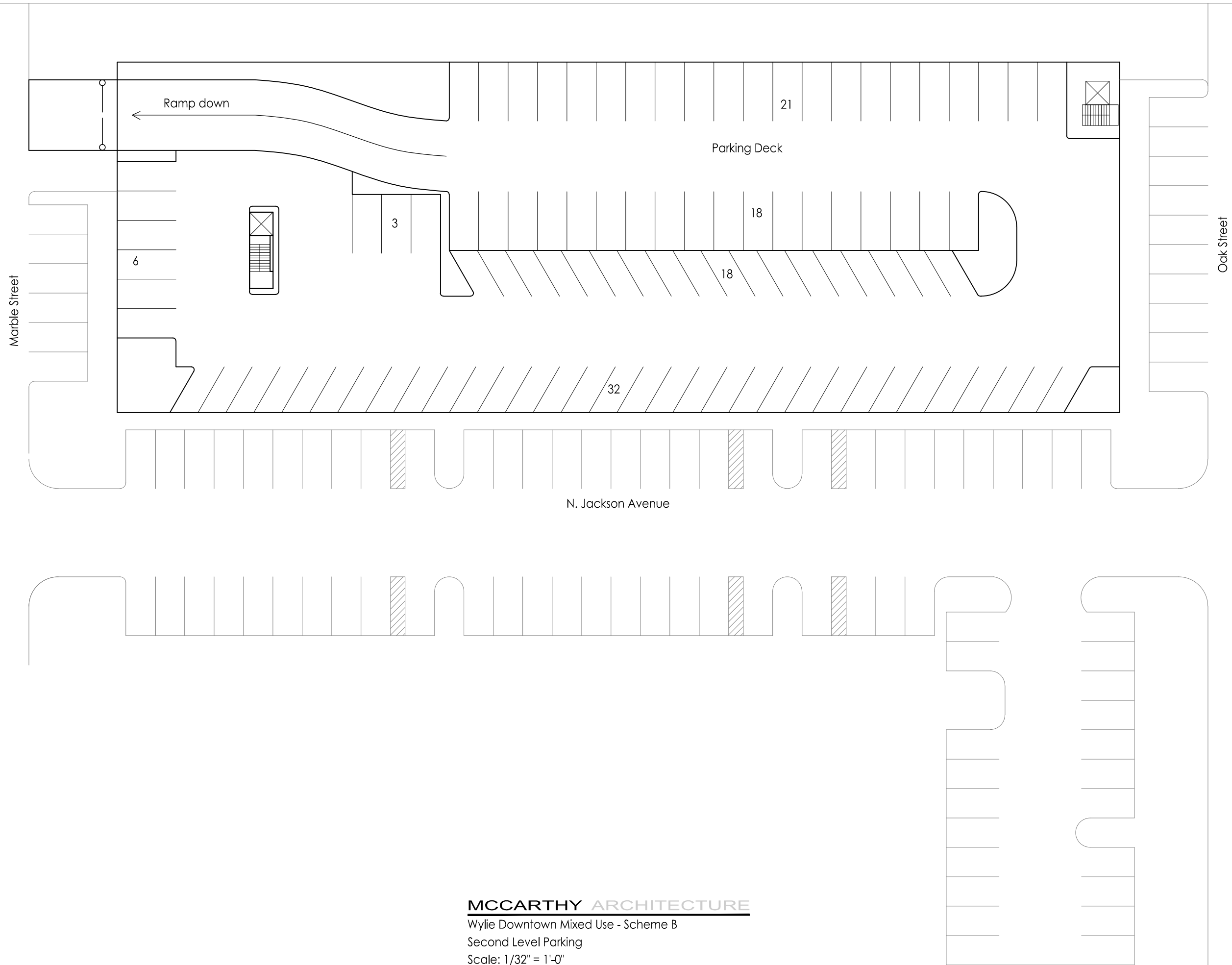
MCCARTHY ARCHITECTURE

Wylie Downtown Mixed Use - Scheme A

Third Level Living Unit

Scale: 1/32" = 1'-0"





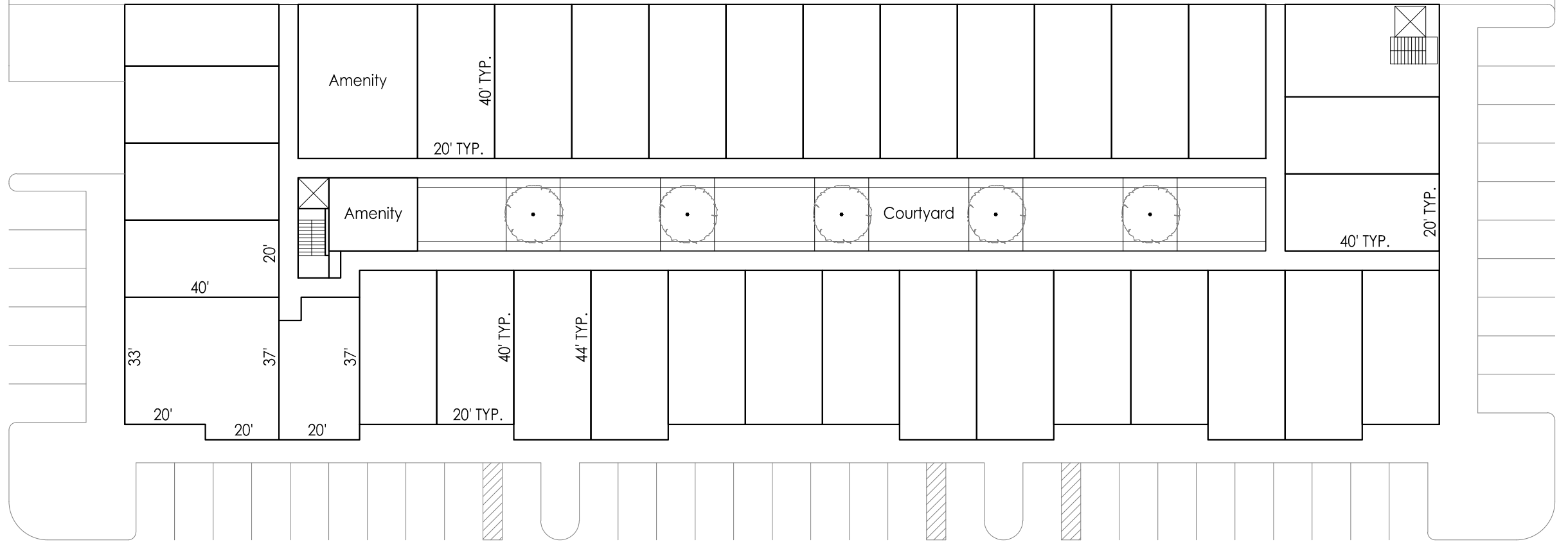
MCCARTHY ARCHITECTURE

Wylie Downtown Mixed Use - Scheme B

Second Level Parking

Scale: 1/32" = 1'-0"

Marble Street



N. Jackson Avenue

Oak Street

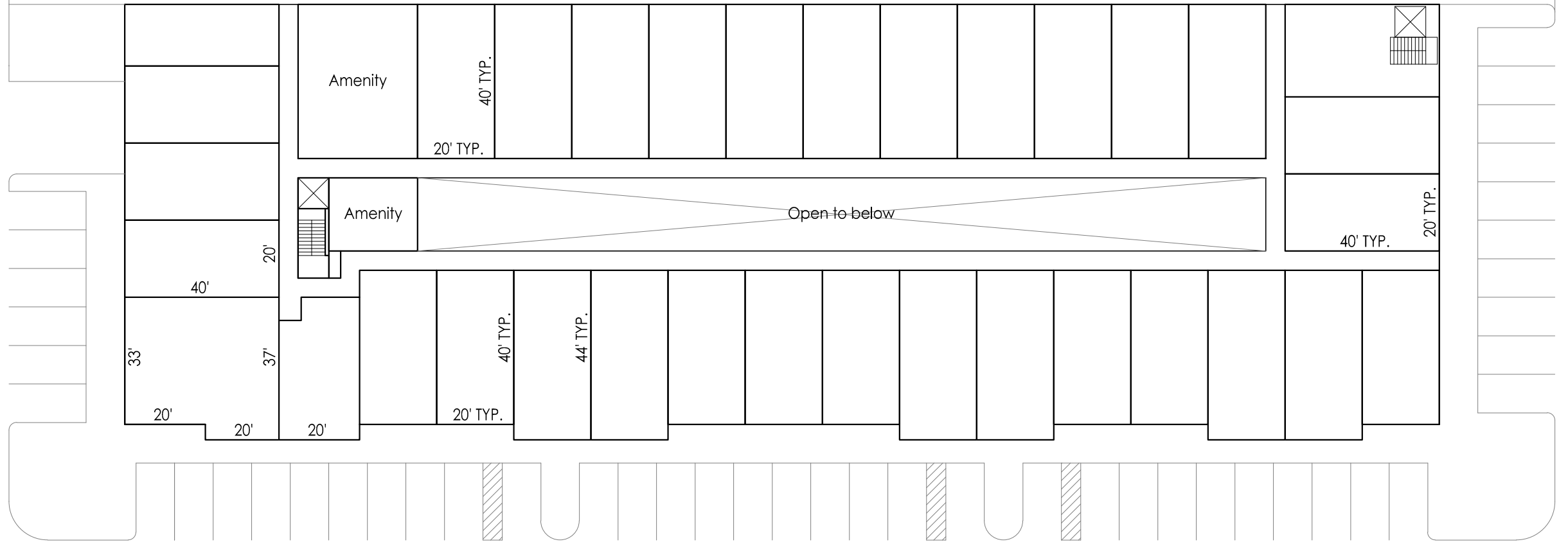
MCCARTHY ARCHITECTURE

Wylie Downtown Mixed Use - Scheme B

Third Level Living Unit

Scale: 1/32" = 1'-0"

Marble Street



N. Jackson Avenue

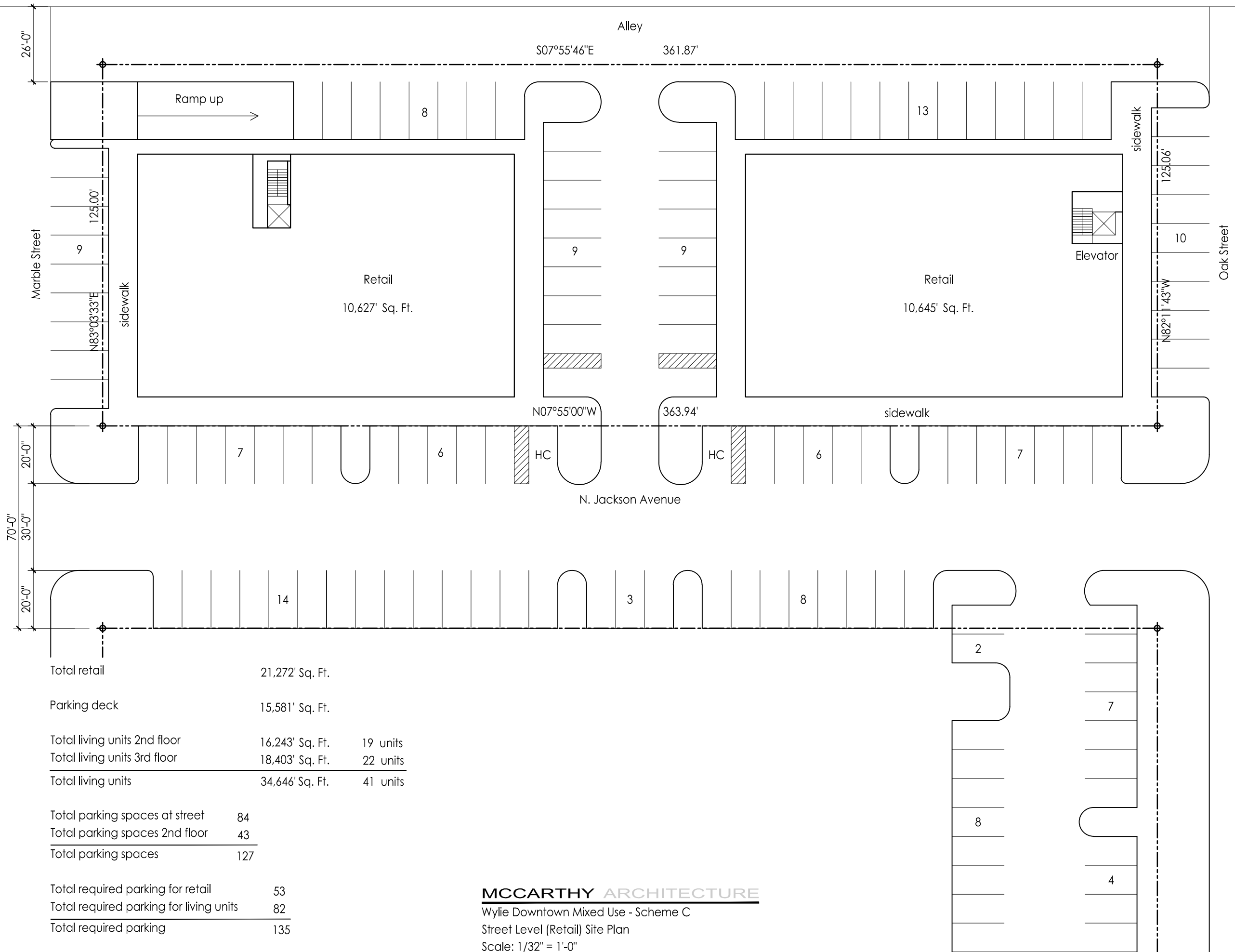
Oak Street

MCCARTHY ARCHITECTURE

Wylie Downtown Mixed Use - Scheme B

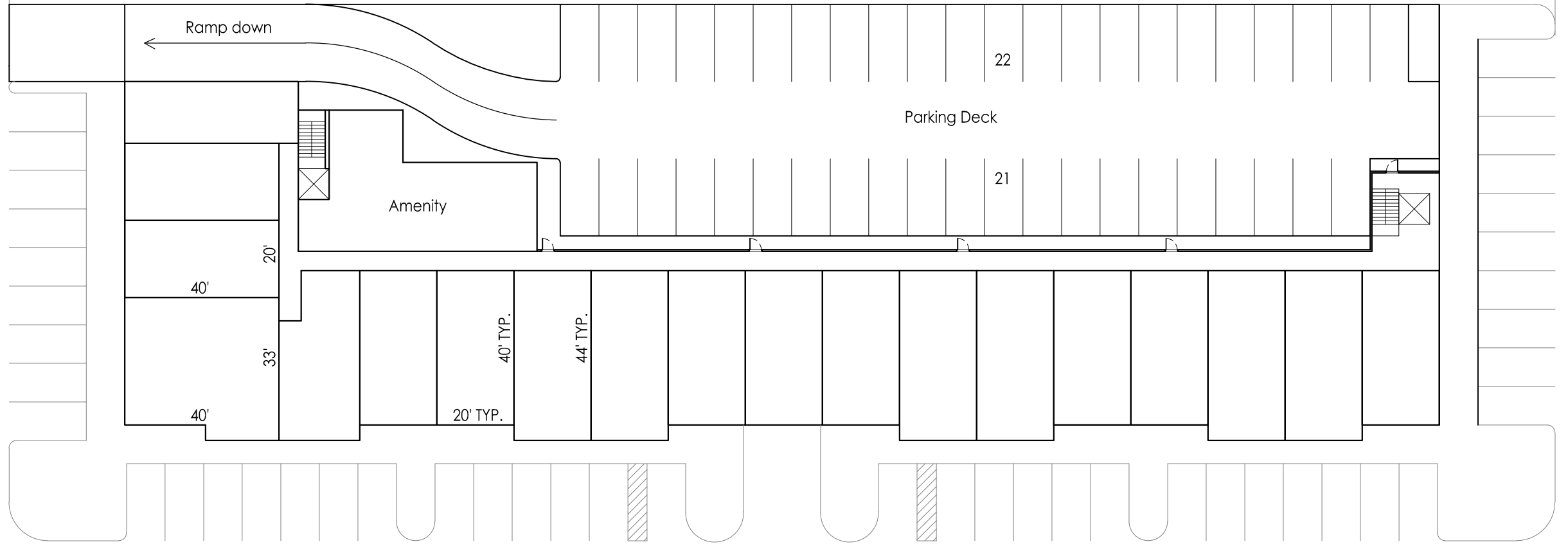
Fourth Level Living Unit

Scale: 1/32" = 1'-0"



Total retail	21,272' Sq. Ft.	
Parking deck	15,581' Sq. Ft.	
Total living units 2nd floor	16,243' Sq. Ft.	19 units
Total living units 3rd floor	18,403' Sq. Ft.	22 units
Total living units	34,646' Sq. Ft.	41 units
Total parking spaces at street	84	
Total parking spaces 2nd floor	43	
Total parking spaces	127	
Total required parking for retail	53	
Total required parking for living units	82	
Total required parking	135	

Marble Street



Oak Street

N. Jackson Avenue

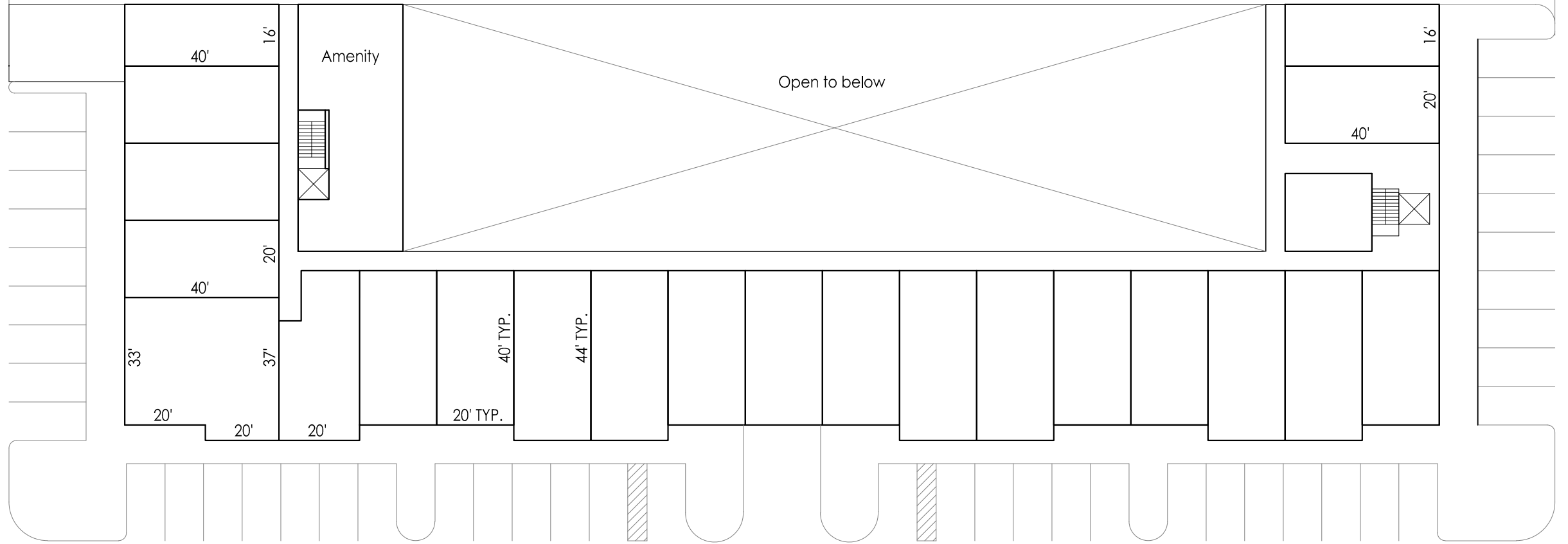
MCCARTHY ARCHITECTURE

Wylie Downtown Mixed Use - Scheme C

Second Level Living Unit

Scale: 1/32" = 1'-0"

Marble Street



N. Jackson Avenue

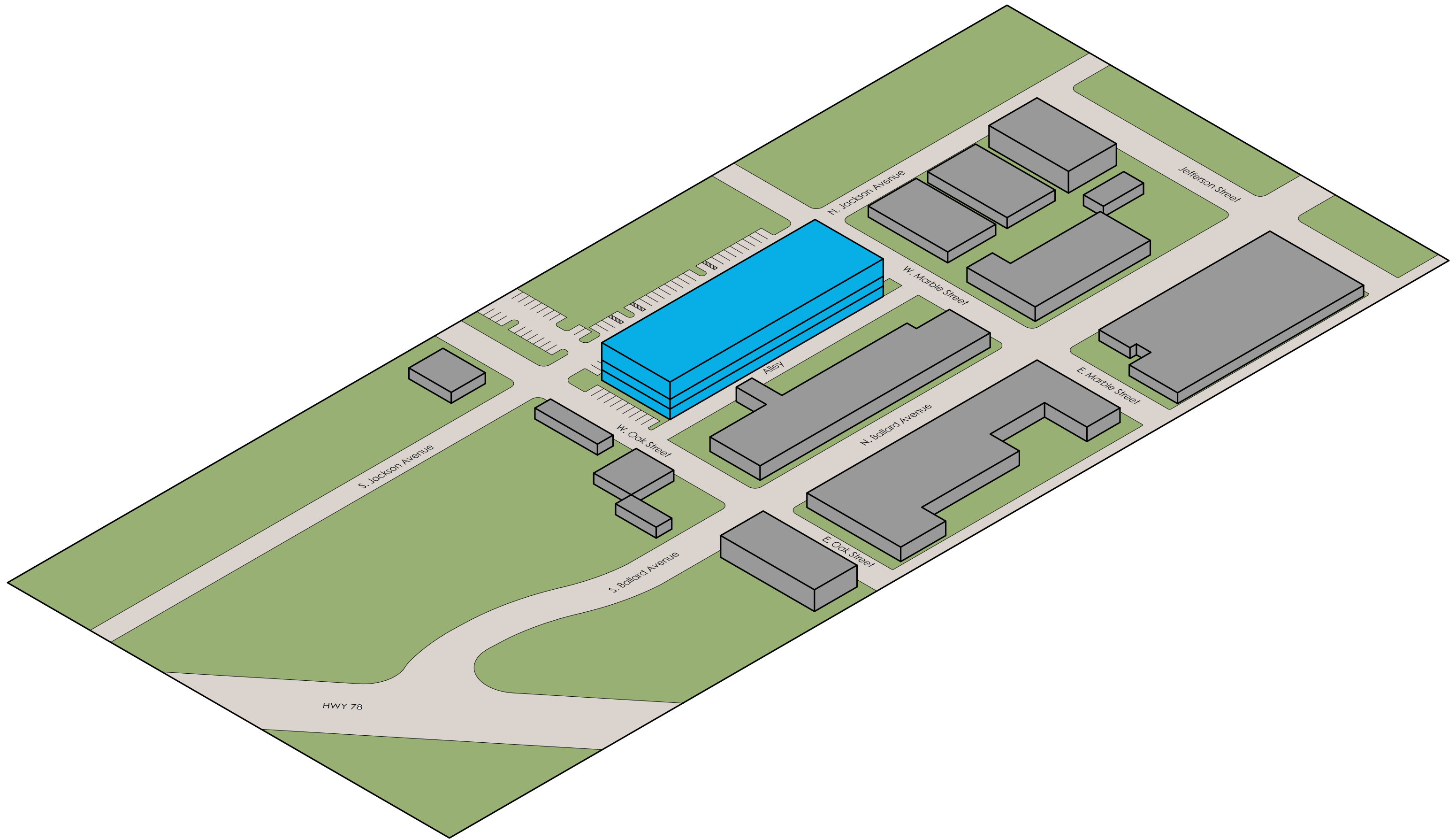
Oak Street

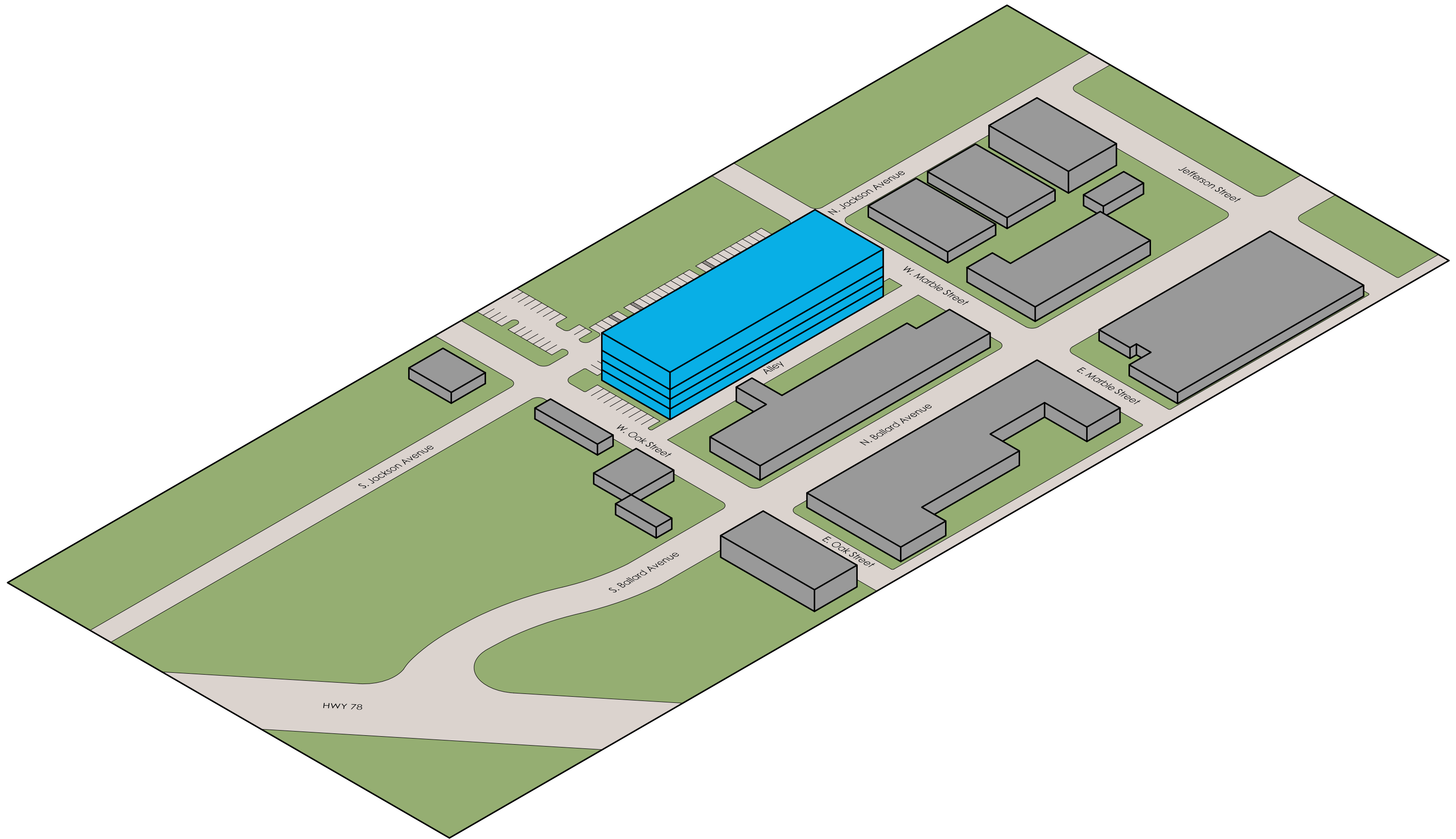
MCCARTHY ARCHITECTURE

Wylie Downtown Mixed Use - Scheme C

Third Level Living Unit

Scale: 1/32" = 1'-0"







Jackson Street Elevation